

Supporting Information for ‘Enhanced ventilation in energetic regions of the Antarctic Circumpolar Current’

Lilian A. Dove¹, Dhruv Balwada², Andrew F. Thompson¹, Alison R. Gray³

¹Division of Geological and Planetary Sciences, Environmental Science and Engineering, California Institute of Technology,

Pasadena, CA, USA

²Lamont-Doherty Earth Observatory, Columbia University, Palisades, NY, USA

³School of Oceanography, University of Washington, Seattle, WA, USA

Contents of this file

1. Figures S1 to S5

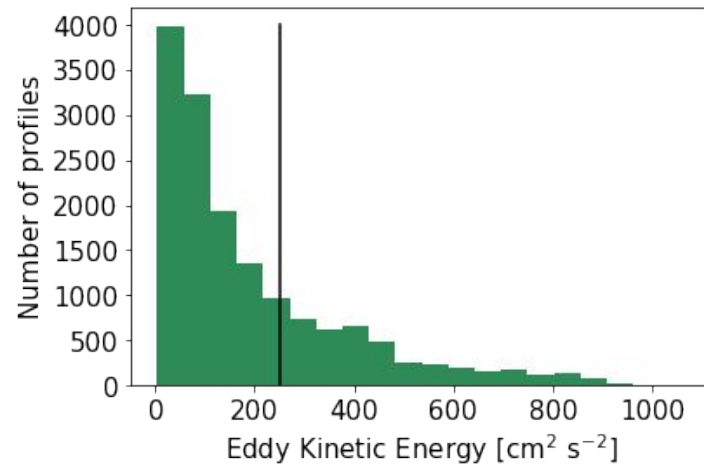


Figure S1. Histogram of the number of profiles by eddy kinetic energy (EKE, cm² s⁻¹) in the defined Antarctic Circumpolar Current. Black line represents the boundary of "high" and "low" EKE used in this work.

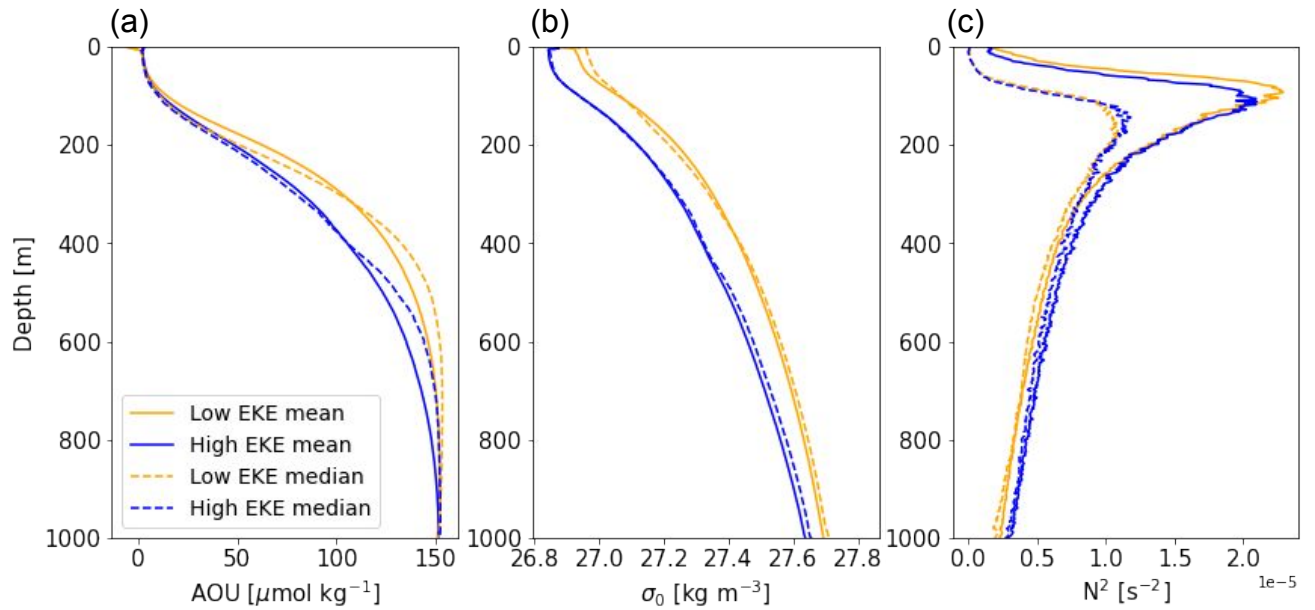


Figure S2. (a) AOU [$\mu\text{mol kg}^{-1}$], (b) Potential density, σ_0 , [kg m^{-3}], and (c) Vertical stratification, N^2 , [s^{-2}], with depth from all float profiles used in this study. For all panels, blue is high-EKE and orange is low-EKE. Solid lines are means while dashed lines are medians.

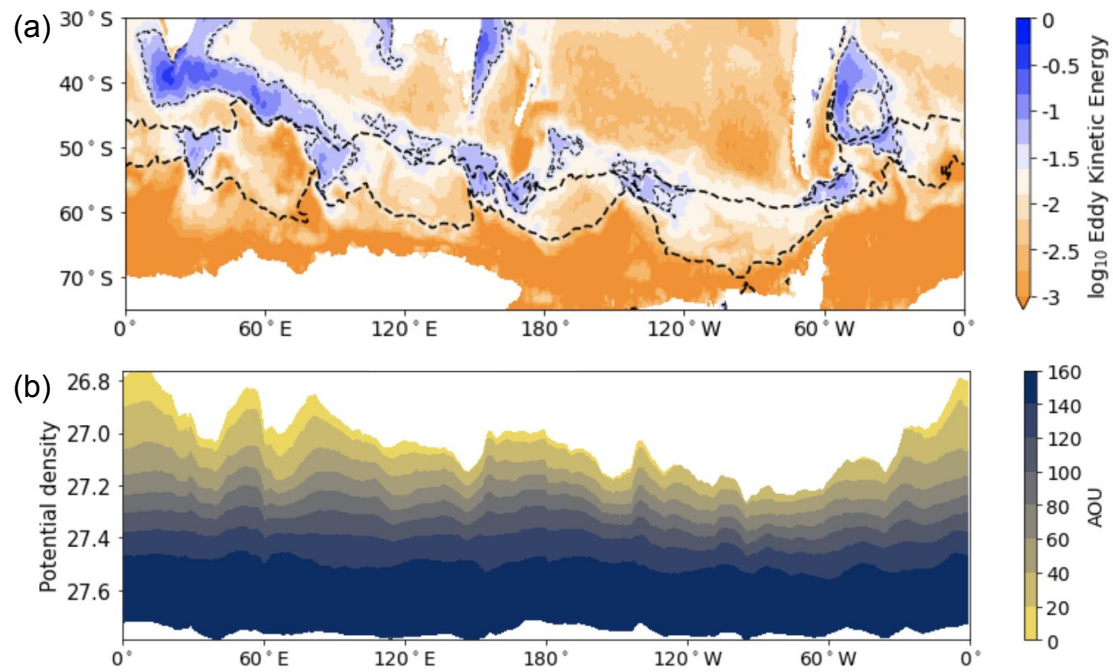


Figure S3. (a) Base-10 logarithm of eddy kinetic energy [$\log_{10} \text{ m}^2 \text{ s}^{-2}$]. Black dotted lines illustrate the definitions used for ACC boundaries in this study. (b) Median AOU [$\mu\text{mol kg}^{-1}$] on longitude plotted on potential density [kg m^{-3}].

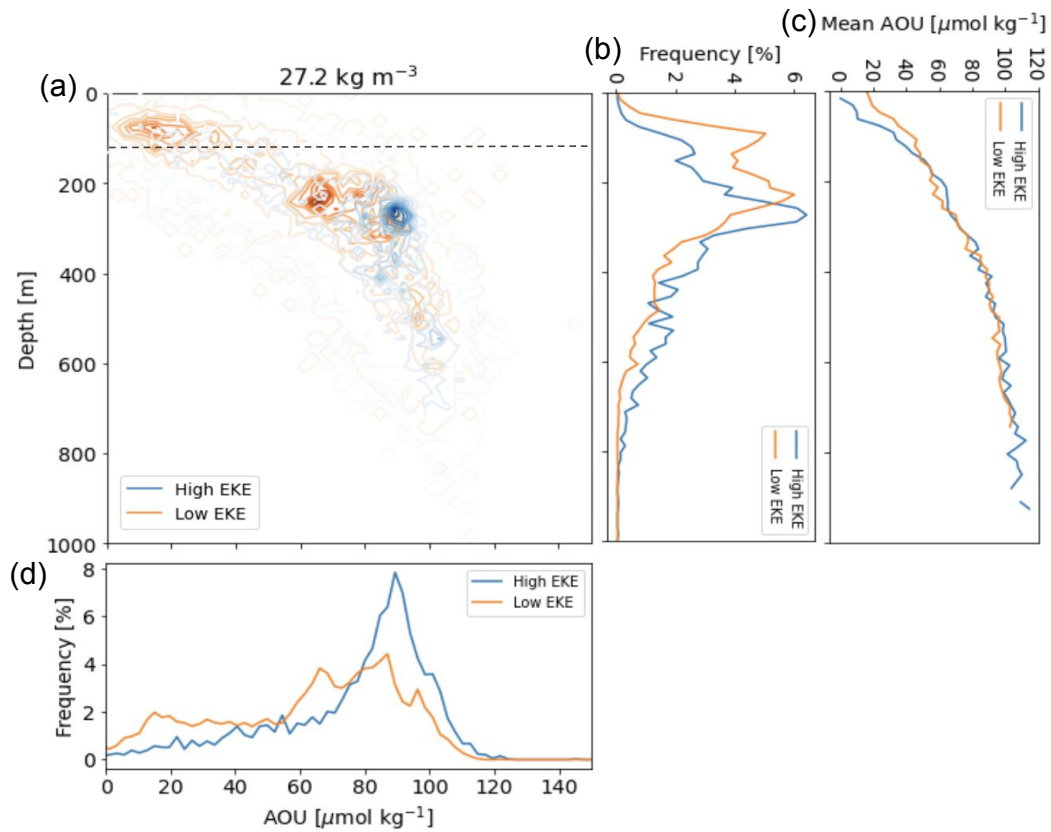


Figure S4. (a) Joint probability density function of all points on the 27.2 kg m^{-3} density surface in depth and AOU for low-EKE (orange) and high-EKE (blue) regions. Dotted black line represents the average mixed layer depth for both the high- and low-EKE regions and $\Delta\text{AOU} = 2 \text{ } \mu\text{mol kg}^{-1}$, $\Delta z = 10 \text{ m}$. (b) Frequency histogram of depths of the 27.2 kg m^{-3} isopycnal in the ACC. (c) Mean AOU [$\mu\text{mol kg}^{-1}$] in depth of the 27.2 kg m^{-3} isopycnal in the ACC. (d) Frequency histogram of AOU of the 27.2 kg m^{-3} isopycnal in the ACC. In (b)-(d), high-EKE regions are denoted in blue, low-EKE regions in orange.

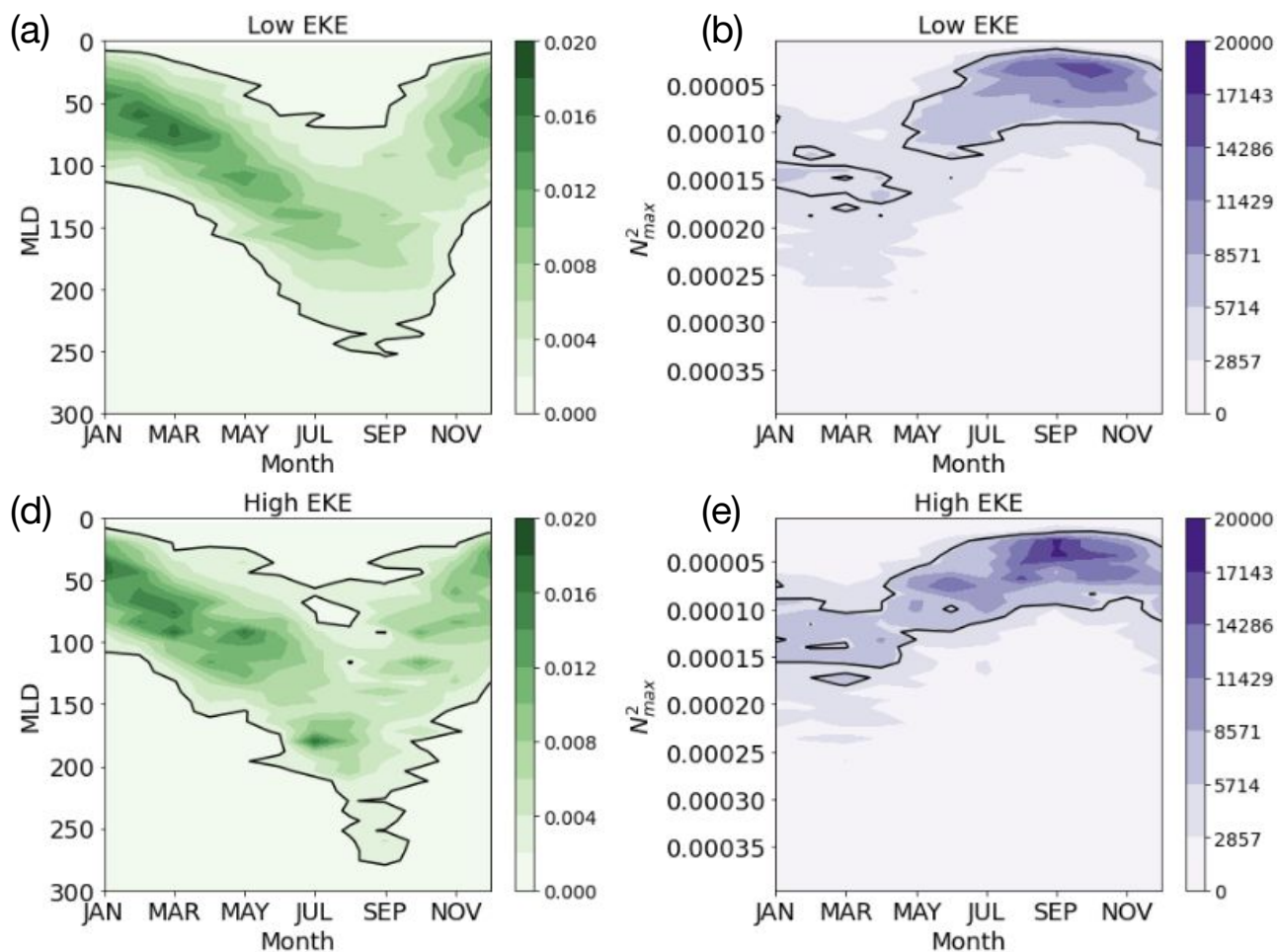


Figure S5. Joint probability density functions of month and (a) mixed layer depth [m] and (b) maximum stratification [s^{-2}]. (c) and (d) Same as (a) and (b) but for the high-EKE regions.